

# The Cottingham CofE fortnightly

Issue 2 – Week Ending 30<sup>th</sup> September 2022

“And let us not grow weary of doing good, for in due season we will reap, if we do not give up.”  
Galatians 6:9

Dear Parent/Carer,

We had a lovely visit to our local church today for Harvest. Each class took with them an offering from the huge selection of goods that you have brought into school. The Corby Foodbank will be delighted with our offering. It was lovely to see the new starters enjoy their first visit to the church. It was equally delightful to see the older children from Hawthorn hold their younger friends hands. Over the past few weeks we have also welcomed new children in Year 2, 4, 5 and 6 so for them it was also a new experience. A huge thank you to Reverend Amanda who works closely with us and makes us feel really welcome. She has invited the children to attend various harvest events taking place at the church during this weekend. If you do attend, please email, Tweet or post on Instagram to tell us all about it.

Last week, I had the pleasure of an evening drink alongside members of the PTFA. It was really encouraging to be alongside 15 parents, all willing to help raise funds for the children at our school. It was a very good turn out and I was so grateful to Leigh for leading the AGM. During the evening, we talked about events that could take place during the year and I am sure that the PTFA will be excited to share some dates with you very soon. You may not be aware that the PTFA fund many activities at school that includes the forthcoming panto! ‘Oh yes they do!’ The panto isn’t cheap and without the funding, we would either charge you £7-8 or not hold such an event. Their fundraising efforts, like PTFA’s from the past, are very much appreciated. Maybe at the next PTFA there will be even more parents and perhaps a few Dads or Grandads??!!

I can’t quite believe that we only have approx. two more weeks until the end of the first term. Please be reminded that we break for half term on Friday 21<sup>st</sup> and return to school on Tuesday 1<sup>st</sup> November. Talking of dates, thank you again to Mrs Southcombe, our unsung hero, who has produced a latest fridge dates for you. After a few years of Zoom, we are pleased to be able to offer you face to face parental/teacher meetings with class teachers. Once again we are able to offer these during the day thus avoiding the need for staff to stay late at school. It hopefully provides you with suitable day time slots also. If you have not done so, I would ask that you do sign up to meet with your child’s class teacher. Please do arrive slightly earlier than your slot so that you can have the chance to look at work in books whilst you wait.

This week has been our very own cycle/scoot to school week and has been well received. The children have enjoyed the opportunity to ride around on the playground and also show off their wheels! At the end of the week Mrs Lloyd will look at providing some prizes for participating pupils. If doable, I would certainly urge you to allow children to cycle/scot to school. Thank you – Mr Scott



## **SAFEGUARDING**

### **Emergency Contact & Medical Information**

It is imperative that we have the correct and most up to date contact and medical information for your child. Please ensure you contact the school office if any information has changed by email:

[office@cottingham.pdet.org.uk](mailto:office@cottingham.pdet.org.uk)

### **GDPR**

### **Privacy Notices**

The latest Privacy Notices can be found on the school website [www.cottinghampriamry.co.uk](http://www.cottinghampriamry.co.uk)

### **Photos**

Please let the school office know if you **DO NOT** want photographs of your child taken and used in the newsletter, twitter or any other social media

## **Incidents / Accidents**



If your child has received medical assistance (after school hours) following an incident/accident during the school day, please email the office to update staff on the injury sustained and any treatment received. All incidents/accidents are reported to PDET via our Smartlog reporting system and it is vital to have accurate information. This is especially important if a child received hospital/doctors treatment. Thank you

[office@cottingham.pdet.org.uk](mailto:office@cottingham.pdet.org.uk)

[01536 771391](tel:01536771391)

# The Cottingham CofE fortnightly

Magnificent Mind



## Academic Year 2022 to 2023

The term dates for the 2022 to 2023 academic year have now been confirmed.

Term	Open to pupils on the morning of	Closed at the end of the afternoon on
Term 1	Thursday 1 September 2022	Friday 21 October 2022
Term 2	Monday 31 October 2022	Friday 16 December 2022
Term 3	Tuesday 3 January 2023	Friday 10 February 2023
Term 4	Monday 20 February 2023	Friday 31 March 2023
Term 5	Monday 17 April 2023	Friday 26 May 2023
Term 6	Monday 5 June 2023	Friday 21 July 2023

## INSET Days 2022 to 2023

- Thursday 1<sup>st</sup> and Friday 2<sup>nd</sup> September 2022
- Monday 31<sup>st</sup> October 2022
- Tuesday 3<sup>rd</sup> January 2023
- Friday 31<sup>st</sup> March 2023

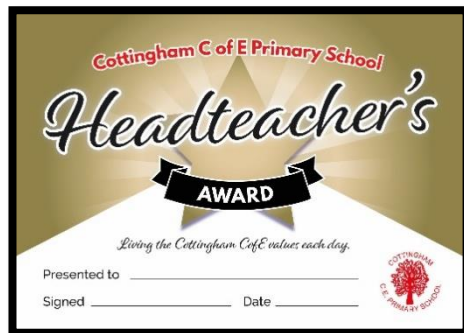


..SPREAD THE WORD..

Please do spread the word and invite parents/carers to come and visit our school. We would love to show them around...

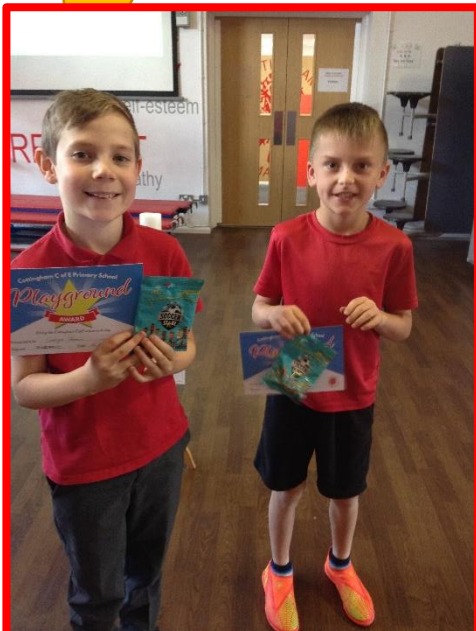


# The Cottingham CofE fortnightly





# The Cottingham CofE fortnightly



# The Cottingham CofE fortnightly

## THE ROLE OF A MAGNIFICENT MIND CHAMPION

TO WORK AS A TEAM WITH THE OTHER  
**MAGNIFICENT MIND CHAMPIONS**  
AT MY SCHOOL

The Magnificent Mind Team (MMT) will meet each Friday lunchtime to talk about their role and organise events and activities that will help raise awareness of wellbeing in school. Children will produce a newsletter which will be shared with you each term.

Mental Health Awareness Day is on Monday 10th October. With this in mind, children are invited to wear 'bright colours' to school.

In addition to this there will be a 'Walking Bus' led by the Magnificent Mind Team and myself more information to follow.....

A whole school yoga session will also be held in the school hall at 2.30pm

TO RAISE  
AWARENESS OF  
WELLBEING AT MY  
SCHOOL AND TO HELP  
TO CREATE A **POSITIVE**  
CULTURE AROUND THIS



TO SPREAD LOTS OF  
**POSITIVE MESSAGES**  
ABOUT WELLBEING  
AT MY SCHOOL IN AN  
**ENTHUSIASTIC** WAY  
(WHETHER THAT IS IN  
THE PLAYGROUND AT  
BREAK TIME OR IN MY  
CLASSROOM DURING  
OUR LESSONS)



# The Cottingham CofE fortnightly

## Sports Update

**William from Year 6 has made it to the British Indoor Karting Championship Regional Finals, full report below:**

"The evening started well with Will setting best time in practice out of the 19 drivers that qualified for local finals in Leicester. It went sideways from here however, in the official 15 minute qualifying session his times were OK but not great with others seeing some excellent laps, this left him in P15 and group B. Only the top 5 in group A final go to regional BUT a lifeline was still available. The one and only option was to win Group B final and take the back of grid wildcard entry in the Group A. From P5 he used every door to slip his way clean in to P2, with 4 minutes to go a yellow light caution was thrown, one of the back markers had crashed. All the racers repacked as with just 3 minutes to go the track went green. Half a lap later he slid into P1 and built a three second lead in the closing two laps to take the chequered flag. That was it wildcard gained. No time to spare a minute later it was back in a different kart for Group A final, one goal P5 and keep it safe. An ugly first two corners with bumps throughout the grid (leicester track starts with two tight hairpins) saw William enter corner 4 in P8 the next 2 laps saw him slide past several opponents into the P6. Great but the front 5 drivers had pulled away with a good 2.5 second lead, what happened next I don't know but William found a focus never seen before and set a Track record for under 12 driver and a full 4 tenths quicker than his previous best to catch the front pack up, half a lap later the driver in P5 (John.M) tried a move around the outside of P4 (Jakub.M) in the upper carousel, this was all William needed to open the door on the inside of the corner to get the P5 he needed. Jakub M continued to defend well having raced William for the last 10 months he knew Wills lines and tactics and blocked any attempts quickly. That was fine William had the position he needed and stayed on Jakob's bumper to the line 10 laps later". **Well done William**



# The Cottingham CofE fortnightly

Summer Reading Challenge 2022



Presented by The Reading Agency.  
Delivered in partnership with libraries.

The Gadgets 2022

School Competition and Statistics

Overall Starters – 709

Overall Finishers – 316

Top Schools

1. Stanion – 82.3%
2. St Brendans – 59.4%
3. Beanfield – 54.2%
4. Weldon – 54.1
5. Cottingham – 53.8%
6. Little Stanion – 47.2
7. Studfall – 42.8%
8. Woodnewton – 32%
9. Exeter – 28.5%
10. Our Lady's – 26.9%

SCIENCE  
MUSEUM  
GROUP

IGNITING  
IMAGINATION  
INSPIRING  
INNOVATORS

20  
THE  
READING  
AGENCY



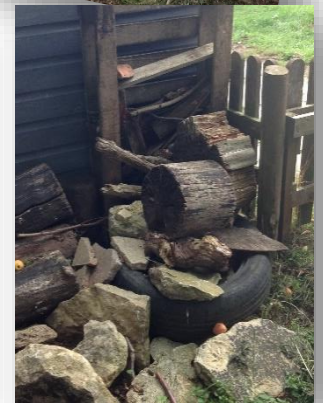
## WILLOW KITCHEN – WHITE GOODS SPONSORS

Our wishes to be able to provide the children with a brand new kitchen space are almost coming true! If delivery is on time, we hope to have the kitchen in place at the start of the new term. The kitchen will host an oven, washing facilities and Snack Island. We will also provide staff with a washing machine and fridge/freezer. *If you would like to, or know anyone interested, to sponsor these white goods please email [head@cottingham.pdet.org.uk](mailto:head@cottingham.pdet.org.uk) we would love to hear from potential sponsors/donators.*





# The Cottingham CofE fortnightly



## FOREST SCHOOL

In the HT welcome, you were told about the PTFA and their fundraising efforts. These children from Willow class have been making great use of our newly developed forest school area. Mrs Nicholson, supported by our lead from Oundle CofE has provided the children with amazing learning experiences. Without the help of the PTFA and without your donations and support to events, this outdoor learning certainly would not be possible. Each week, the children will experience new skills no matter what the weather. The Forest School area is always happy to receive donations of plants, logs, wood chip, peat free compost etc. *Again, if you can help out please email [head@cottingham.pdet.org.uk](mailto:head@cottingham.pdet.org.uk) If any parents would like to volunteer to assist in the FS on a regular basis, we would love to hear from you. Come and join in the fun on a Wednesday morning! We will make you a hot chocolate!*



FENCING ANYONE?



# The Cottingham CofE fortnightly



## School parking

The Northamptonshire Safer Roads Alliance (NSRA) are working together in partnership to reduce the number of people killed or seriously injured on Northamptonshire's roads. We want to ensure that everyone gets home safely and we need your help to address the parking issues around our schools. We know how busy school drop off and pick up is and how difficult it can be to park and that time is of the essence. We also see some great examples of parking and people walking, cycling and scooting to school. However, we are still seeing dangerous and illegal parking which is affecting the safety of the children and the local residents.

Inconsiderate parking endangers **YOUR** child/children and puts other lives at risk. Parking on zig-zag lines or pedestrian crossings causes visibility issues to drivers and people walking on the pavement. You **MUST** ensure that there is adequate space for an Emergency Service Vehicle to access schools and nearby properties. The Highway Code is for **ALL** road users and our most vulnerable road users are pedestrians, particularly children, older or disabled people, cyclists and motorcyclists. Many of the rules in the Code are legal requirements and if you disobey these rules you are committing a criminal offence. You may be fined, given penalty points on your licence or be disqualified from driving. In the most serious cases you may be sent to prison.

There are specific rules, which apply to parking around our schools

- You **MUST NOT** wait or park, or stop to set down and pick up passengers on school entrance markings
- You **MUST NOT** wait or park on yellow lines during the times of operation shown on nearby time plates. Double yellow lines indicate a prohibition of waiting at any time even if there are no upright signs
- You **MUST NOT** stop or park on a pedestrian crossing, including the area marked by the zig-zag lines
- You **MUST NOT** leave your vehicle in a dangerous position or where it causes any unnecessary obstruction of the road
- **DO NOT** stop or park near a school entrance, anywhere you would prevent access for Emergency Services, at or near a bus stop, within 10 metres of a junction, where the kerb has been lowered to help wheelchair users and powered mobility vehicles, in front of an entrance to a property or where you would obstruct cyclists' use of cycle facilities

Unsafe parking and driving, is also shown to deter people from walking and cycling to school, something we are actively encouraging to create a healthier and safer school environment. We realise sometimes parking near the school is necessary but we urge you to park safely and legally a little further way from the school and walk in.

The safety of our children is paramount. We would like to thank you for your co-operation in avoiding significant problems/potential dangers being caused by careless or inconsiderate parking outside the school. We hope that we can all work together to improve safety for our children and show more consideration for our neighbours.

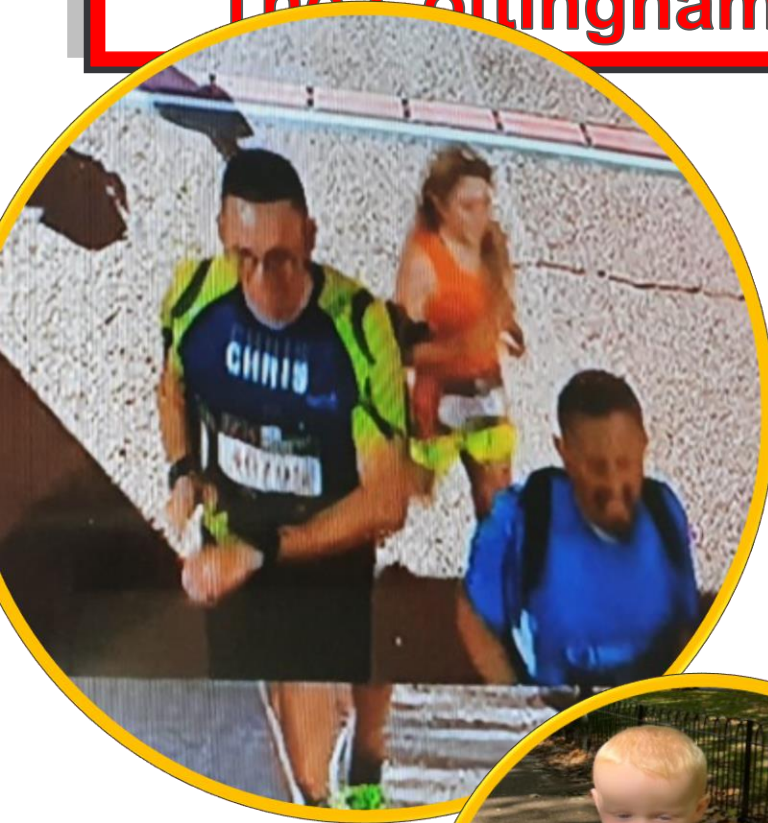
Stephen Mold - Northamptonshire Police, Fire and Crime Commissioner

Nick Adderley - Chief Constable, Northamptonshire Police

Darren Dovey - Chief Fire Officer, Northamptonshire Fire & Rescue

John Coombes - General Manager, Northamptonshire Highways

# The Cottingham CofE fortnightly



We are all very proud of Alice's dad, who completed the London Marathon in a time of 3hours 48 minutes and raised £2000 for Alzheimer's Society. Here are his pictures in special GOLD medal borders! Alice will be showing the children an actual gold medal on Friday during worship!!!

**WELL DONE FROM US ALL!!**